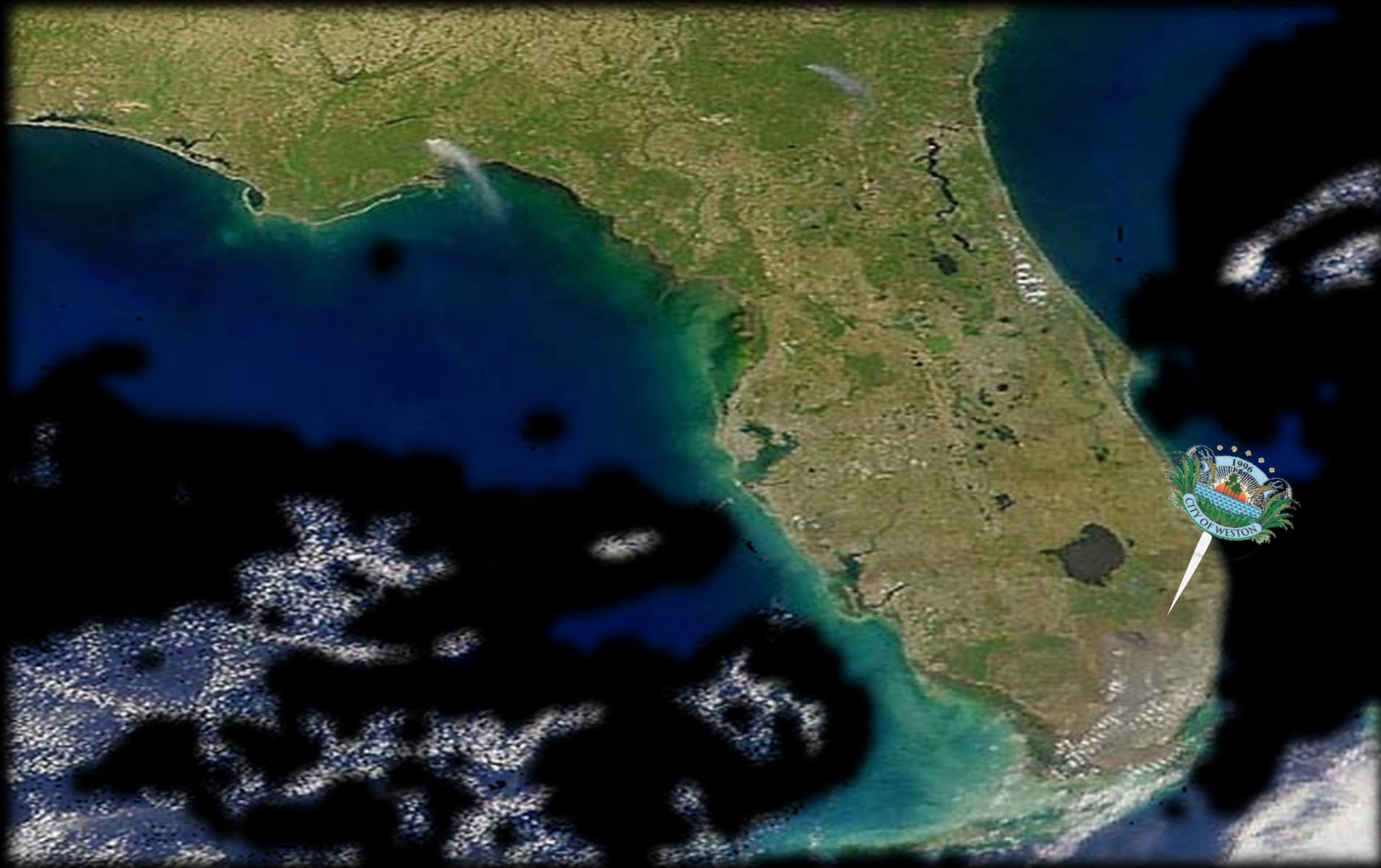




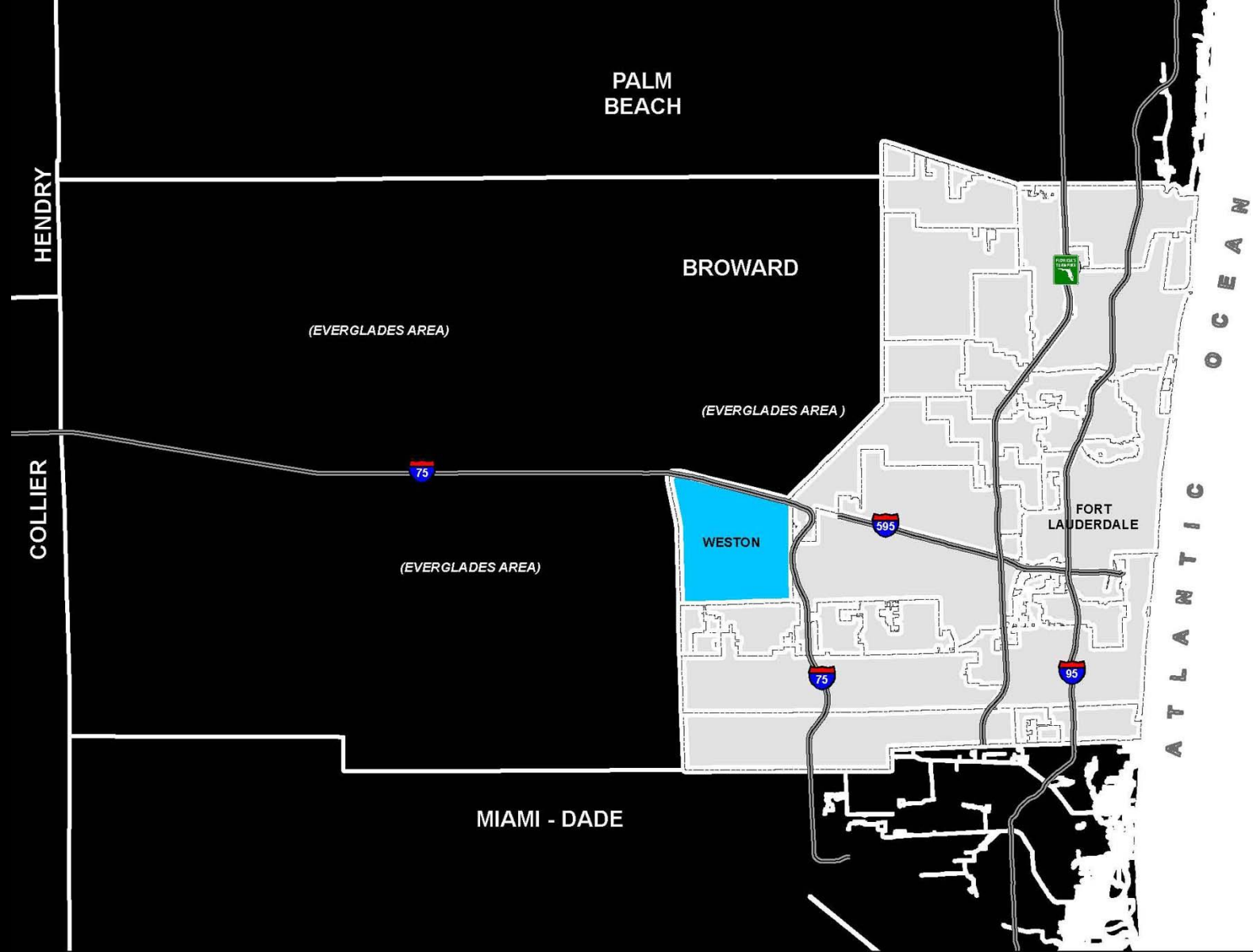
\*\*\*

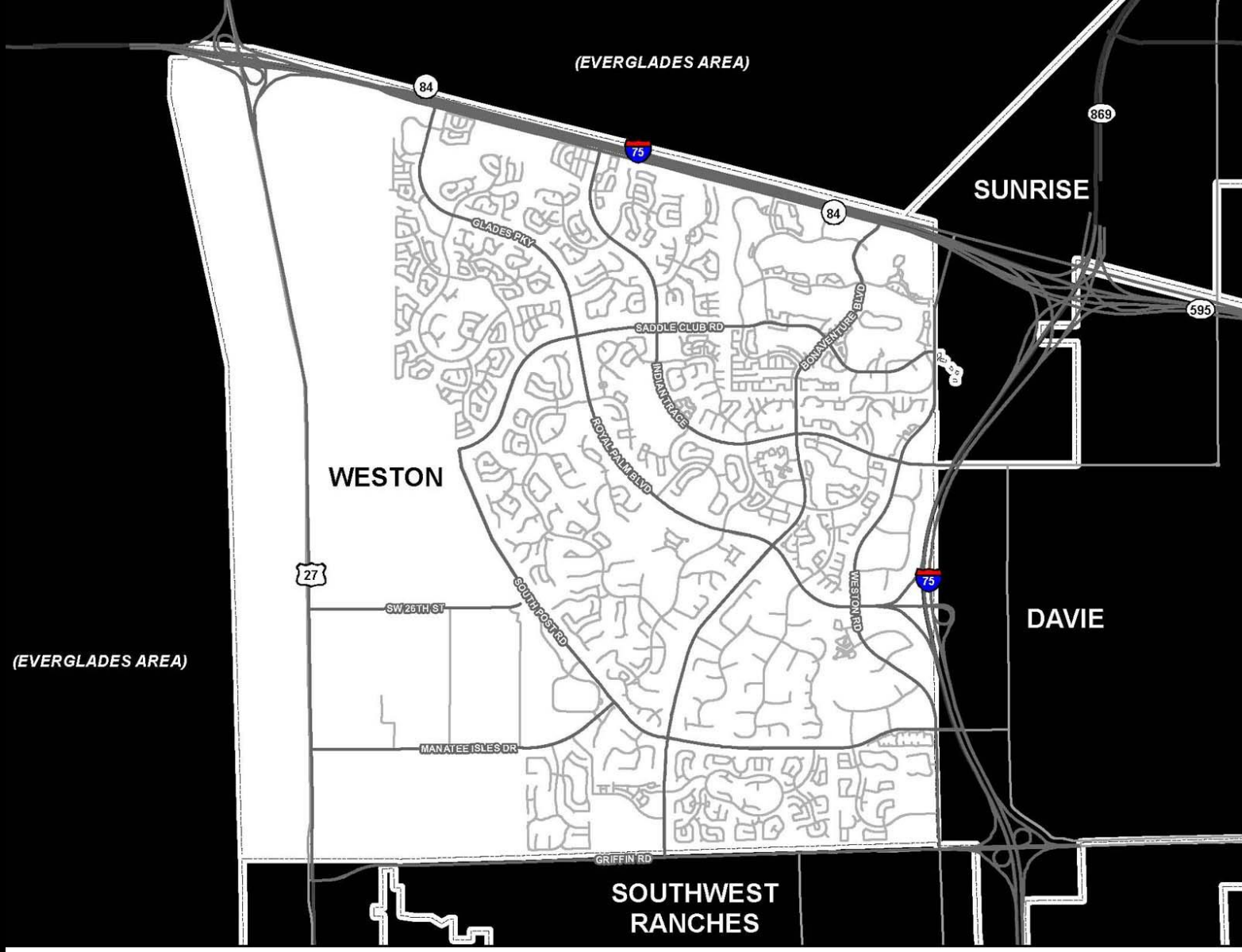












(EVERGLADES AREA)

84

75

869

SUNRISE

84

595

WESTON

27

SW 26TH ST

(EVERGLADES AREA)

MANATEE ISLES DR

SOUTH POST RD

GRIFFIN RD

SOUTHWEST  
RANCHES

DAVIE

75

\$6.3 BILLION

Gross Taxable Value

\$115 MILLION

All Funds Budgets



\$84 MILLION

Investments

\$35 MILLION

General Fund

65,000

Shareholders

2,000

Wetland Acres

1996

Incorporated

242

Park Acres



35

Service Contracts

27

Square Miles

Nine  
Employees

# Five

## Member Commission

AAA

Credit Ratings

Two

Dependent Districts



One

Mission

VALUE

One

Vision

SUCCESS

One  
Core Value

INTEGRITY

This  
is

# THE CITY OF WESTON



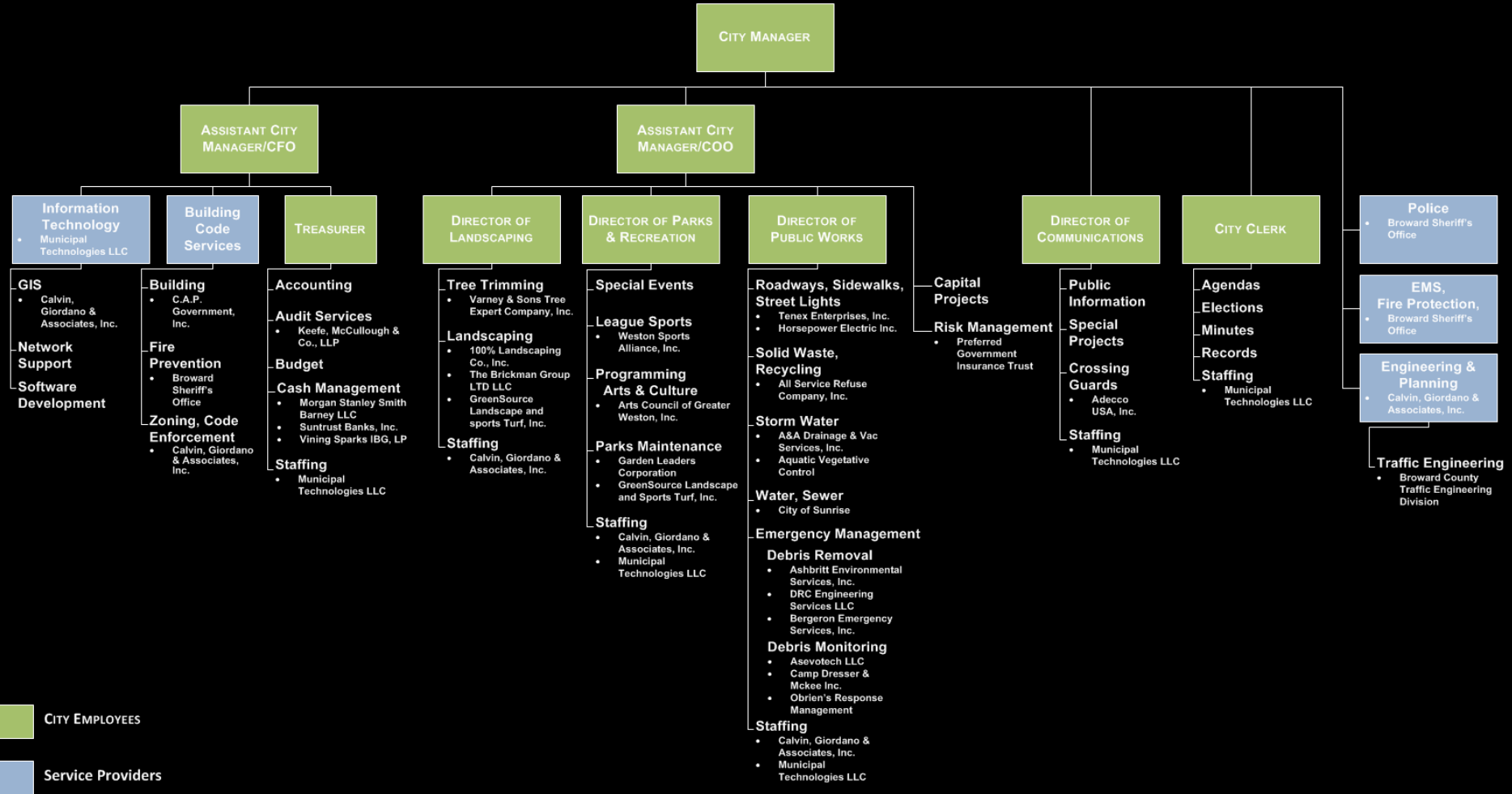
THE  
CITY OF WESTON



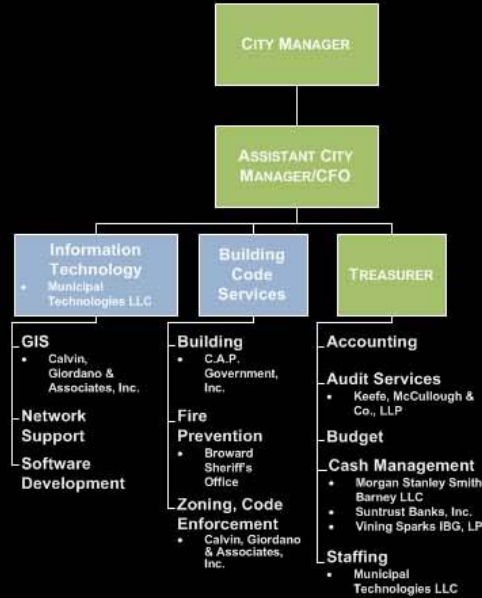
# The Organization

# THE CITY OF WESTON

Organizational Chart FY 2011  
by  
City Employee and Responsibility



THE  
CITY OF WESTON  
Partial Organizational Chart FY 2011  
by  
Assistant City Manager/CFO and  
Responsibility

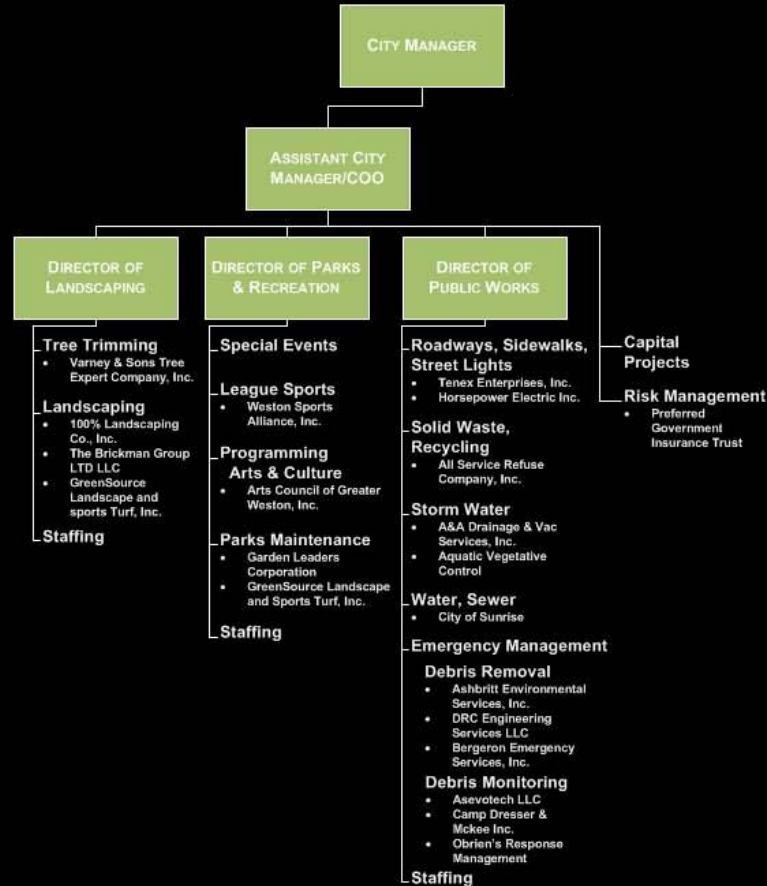


CITY EMPLOYEES

Service Providers

# THE CITY OF WESTON

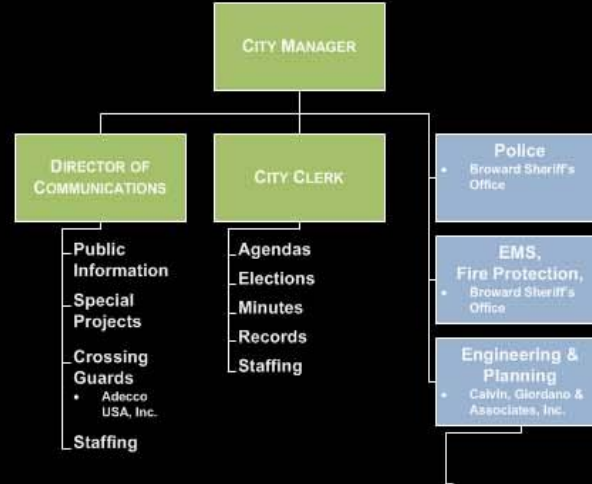
Partial Organizational Chart FY 2011  
by  
Assistant City Manager/COO and  
Responsibility



CITY EMPLOYEES

Service Providers

THE  
CITY OF WESTON  
Partial Organizational Chart FY 2011  
by  
City Manager and Responsibility



CITY EMPLOYEES

Service Providers

# THE CITY OF WESTON

MMXI The City of Weston, Florida  
*The Nation's Premiere Municipal Corporation<sup>SM</sup>*

All rights reserved and may not be reproduced  
without permission of The City of Weston